

The Remodeling & Design Resource

# Home

## COLOR POWER!

MAKE YOUR  
ROOMS BIGGER,  
BRIGHTER, BETTER

**3** BEFORE  
& AFTER  
KITCHEN  
MAKEOVERS

LUXURY LOOKS AT  
AFFORDABLE PRICES

JANUARY/FEBRUARY 2008  
\$3.99 USA £2.95 UK  
POINTCLICKHOME.COM



# CENTRAL EATING

TRADING A CRAMPED COOKING-ONLY SPACE FOR A RELAXED, FAMILY-FRIENDLY HAVEN

#### ON-THE-GO ZONE

Built-ins between the island and a casual eating area hold a satinwood-framed microwave and a prep counter. Two under-counter stainless steel refrigerator drawers keep cold beverages and condiments handy.



**H**OME ENTERTAINING WAS DRAMATICALLY different in 1935, when this elegant Mansard-style house rose in San Francisco's Cow Hollow neighborhood. Its galley kitchen huddled at the side of the main floor, where cooking was relegated to a constricted space overlooking an alley. When Brigitte Sandquist and Phil Black bought the house, the couple and their young children had more up-to-date needs. "Because we entertain informally a lot, we wanted someplace we could cook and hang out, with lots of storage and light," says Sandquist. Working with

local designer Holly Hulburd of Hulburd Design, they relocated the kitchen to the 15-by-24-foot dining room with a southern exposure facing the street. Hulburd created an efficient rectangular floor plan made up of distinct zones for the kitchen's many uses. Inspired by her clients' minimalist art collection, she stripped away ornate moldings and added clean, spare details featuring natural materials accented by tomato red and citron yellow, colors reminiscent of farmers' market produce. Says Hulburd, "It's an exciting look that won't go out of style and functions well for cooking, for company, and for family life."

STYLED BY **LINDA POPE** PHOTOGRAPHED BY **KEN GUTMAKER** WRITTEN BY **NORMAN KOLPAS**





**EXTRA SEATING** To create a clear division between eating and prep areas, a 6-inch-high stainless steel partition divides the 6-by-4-foot island in half lengthwise. The bar counter with pull-up stools and the dining table accommodate up to a dozen people, all well clear of those who are putting together the meal. Most of the custom cabinetry was fashioned from satinwood finished with a light stain or from medium-density fiberboard painted for contrast. Bamboo flooring throughout the house's ground level provides visual continuity and adds to the kitchen's warm-toned woods. Without much hardware visible, the cupboards' rectangular grid is played up; variety is contributed by a few frosted-glass doors, others that are spray-painted tomato red or citron yellow, and open shelves.

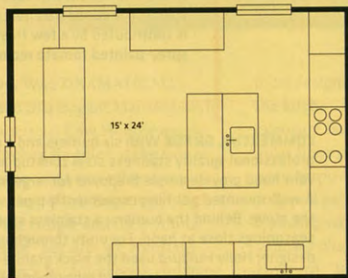


**COMMERCIAL GRADE** With six burners and a griddle, the professional-quality stainless steel cooktop and matching vent hood provide ample firepower for large-scale meals. A wall-mounted pot filler conveniently pipes water right to the stove. Behind the burners, a stainless steel niche keeps seasonings close at hand. For unity throughout the room, designer Holly Hulburd used the black granite countertops'  $\frac{3}{4}$ -inch thickness as a standard measurement for backsplash tiles and recessed finger pulls on drawers and cabinet doors. The granite was chosen for its durability, and its black surface is repeated by the dining table and the chair and stool seats.



**LIGHT WORK** Two of the family's three children collaborate on a project at the ebonized walnut trestle table in the dining area. Hulburd custom-built the banquette. It's upholstered with a cozy, easy-care cotton chenille in a tomato red echoed by the cabinets. Dining chairs with black leather seats on chrome-plated steel bases combine modernist style, comfort, and durability. Translucent mesh window shades roll up from the bottom to the transom, "so we can wear our jammies in the kitchen," says homeowner Brigitte Sandquist. Gallery-white walls provide the backdrop for a drawing and a photograph from the family collection. The two frames repeat a block motif found in the windows, cabinetry, and backsplash tiles.

## FLOOR PLAN



No major structural changes were required to create a new kitchen in the large rectangular space that previously had been the dining room. Its generous dimensions allowed for free-flowing traffic around an island, with each of the four walls (clockwise from far left) devoted to a different activity: a built-in banquette and dining table in one corner, an adjacent breakfast station, a double oven and cooktop, and the main sink alongside the dishwasher and refrigerator. A prep sink, second dishwasher, and trash compactor are installed in the island.





**DAILY BREAD** To enable a serene morning routine, the breakfast center has all the necessary ingredients assembled—while keeping clutter at bay. A small red door to the rear of the microwave oven opens to reveal the toaster, which rolls out on a wooden platform along with a coffeemaker standing behind it. Milk and juice reside in dual refrigerator drawers below the area's butcher-block counter. The light-colored wood countertop here and on the island contrasts with the kitchen's black granite surfaces.



**HEAT AND EAT** A custom satinwood enclosure surrounds the microwave, finished on the front like a picture frame. Above it, a recessed satinwood door with a sturdy stainless steel rod pulls out and swings down to conceal the oven completely. The long handle matches those of the refrigerator drawers below it as well as on the pots-and-pans storage elsewhere in the room.

## Families Have Saved Hundreds of Dollars on Heating Costs

And never have to buy fuel — wood, oil, gas, kerosene — ever again!

### Your Benefits with Hydro-Sil:

- Slash heating cost with energy saving technology
- Lifetime warranty. No service contracts
- Safe, complete peace of mind
- Clean, no fumes, environmentally safe
- U.L. listed
- Preassembled — ready to use
- No furnaces, ducts, or chimneys
- Portable (110V) or permanent (220V)
- Whole house heating or single room

Lifetime Warranty

### Here's what others are saying...

- F. Smalley — "A company that advertises the truth saved me 50% compared to my gas heat. I found it hard to believe until my power bill came. Thanks a million!"
- R. Hanson — "I can't begin to tell you how pleased I am with Hydro-Sil...the first time in 25 years our electric bill was reduced... saved \$635, over 40%!"
- A. Gonsalves — "We replaced 20 electric heaters with Hydro-Sil. Wow — what a difference! We received a substantial reduction of our electric bill. I have recommended Hydro-Sil to many people!"

Hydro Portable  
with Lifetime Warranty!

## ORDER TODAY!

2 MODELS TO CHOOSE FROM

### PORTABLE OR PERMANENT — YOUR CHOICE!

220 VOLT PERMANENT	Approx. Area to Heat	Discount Price	Quantity
8' 2000 watts	250-300 s.f.	\$309	
6' 1500 watts	180-250 s.f.	\$279	
5' 1250 watts	130-180 s.f.	\$259	
4' 1000 watts	100-130 s.f.	\$229	
3' 750 watts	75-100 s.f.	\$189	
2' 500 watts	50-75 s.f.	\$169	
Thermostats	Call for options & exact heater needed		

110 VOLT PORTABLES (Thermostat Included)	Discount Price	Quantity
5' Hydro-Max 750-1500 watts	\$229	
4' Convector — Dual watt	\$179	
3' 750 watts — Silicone	\$179	
\$18.00 shipping per heater	\$	
Total Amount	\$	

Name \_\_\_\_\_  
 Address \_\_\_\_\_  
 City \_\_\_\_\_ St. \_\_\_\_\_ Zip \_\_\_\_\_  
 Phone \_\_\_\_\_  
 MasterCard or Visa Account Information: \_\_\_\_\_  
 Acct # \_\_\_\_\_  
 Expiration Date \_\_\_\_\_

Order today or contact us for more info.

Check  MasterCard  Visa

**1-800-627-9276**

[www.hydrosil.com](http://www.hydrosil.com)

Hydro-Sil, P.O. Box, 662, Fort Mill, SC 29715